

You will be found

A1  *p*
Have you

5  e-ver felt - like no - bo - dy - was there? Have you

7  e-ver felt - for - got - ten in the middle of ___ no - where? Have you

9  e-ver felt - like you could di - sa - ppear? Like you could fall, and no one would hear?

12  So ___ let that lonely fee ling wash a way

16 'Cause maybe there's a rea - son to be - lieve ___ you'll be o - kay. 'Cause

19  when you don't. feel strong e - nough ___ to stand, You can

21  reach, reach out - your ___ hand. And oh, ___

24  someone will . come running, And I know ___ they'll take you ___ home.

27  *mp* Even when the dark comes crashing through, when you need a friend to car - ry you

29



And when you're broken on the ground, You will be

31



found. So let the sun come streaming in, 'Cause you'll reach up and you'll rise a - gain,

33



Lift your head and look a - round, You will be found,

36



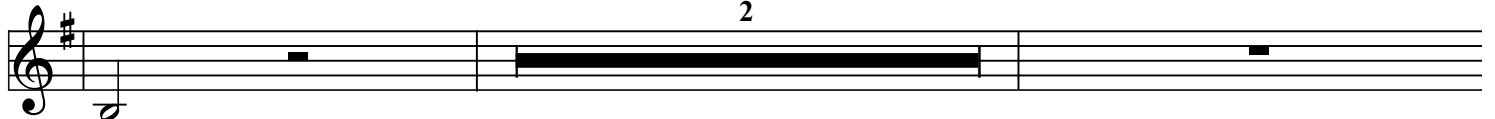
You will be found, You will be

39



found, You will be found, You will be

43



found.

47



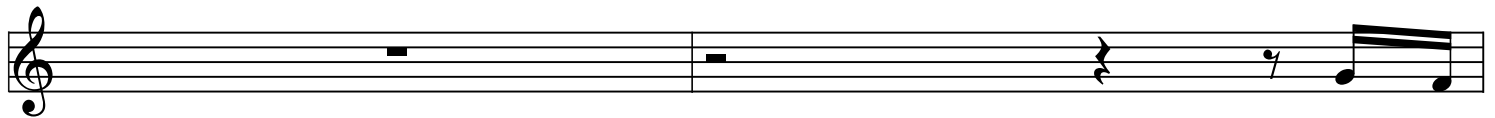
There's a place where you don't have to feel unknown

53



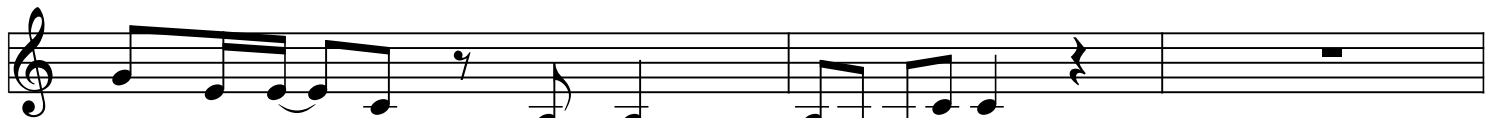
And every time that you call out you're a little less alone.

56



From a -

58



- cross the silence your voice is heard

61



Some - one will come running,

63

To take you home, Someone will come running, to take you home,

65

home.

67

f
Ev - en when the dark comes crashing through, When you need a friend to car - ry you,

69

— And when you're bro - ken on — the ground, You will be

71

found. So let the sun come stream - ing in, Cause you'll reach up — and you'll rise a - gain

73

— If you on - ly look a - round, You will be found,

76

— You will be found, You will be found. *ff* Out of the sha - dows the

80

mor - ning is brea - king and all — is new, — all — is new.. It's

83

fill - ing up the em - pty, — And sud - den - ly — I see that all — is new, — all .

86

— is new. *p* You are not a lone,

89

cresc.
You are not a lone, You are not a lone,

91

You are not a-lone, _ You are not a-lone, _

You are not a-lone, . You are not a-lone

93

You are not, You are not a-lone. you are not a-lone_

You are not a-lone, _

95

p

Ev - en when the dark comes crash - ing through,

96

When you need some - one to car - ry you, _

97

f

— You will_ be

99

found. So let the sun comestreaming in, Cause you'll reach up _ and you'll rise a - gain,

101

— If you on - ly look - a - round, _ You will be

103

found, _____ You will be
found. Ev - en when the dark comes crash - ing through,

105

found, _____ You will be found, _____
Where you need some one to car - ry you, You will be found, _____

108

— You will be found.
— You will be found.